

FLOODLIGHTS

FL.. Series floodlights



Due to the body made of aluminium with low content of copper and tempered glass, FL.. Series floodlights, provided in a wide range of wattage and power, are ideally suited for ON and OFF-SHORE applications and all kinds of industries where there is a high level of corrosion, mainly for lighting wide areas.

To increase further surface protection, upon request it is possible to apply an OFF-SHORE painting cycle suitable for marine environments.

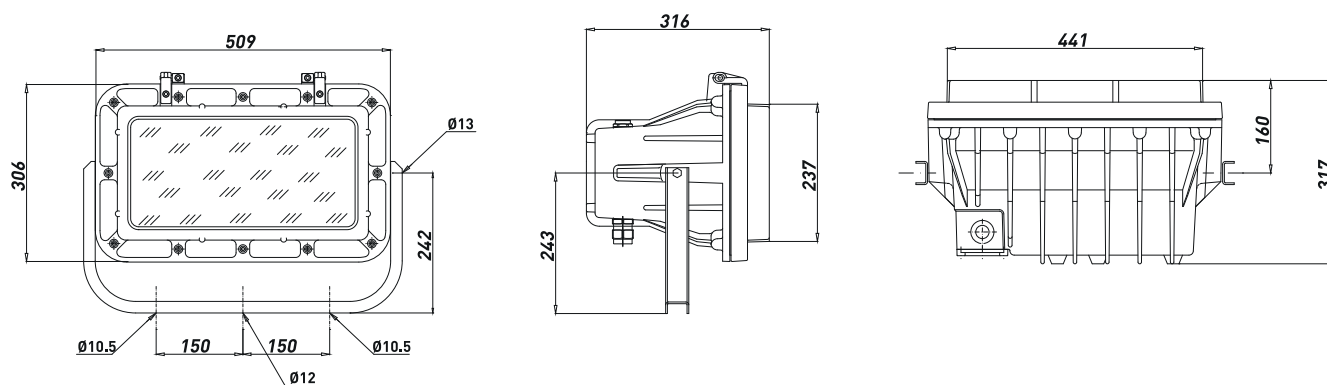
Standard floodlights are manufactured with symmetrical narrow beam reflector and symmetrical wide beam reflector upon request (ordering codes upon request).

For ease of installation and maintenance, the luminaire features an integral Ex-e connection box and AISI304 stainless steel universal mounting bracket.

TECHNICAL FEATURES

Material	Aluminium with low content of copper Stainless steel AISI316L (ordering codes upon request)
IP rating	IP66
Ambient temperature range	-50°C to +55°C
Approvals	INERIS 00ATEX0023X (standard) / GOST R (marking upon request, ordering code to be required)
Marking	II 2 GD Ex-de IIB+H2 T3 Gb Ex-tb IIIC T200°C Db IP66
Gaskets	Gasket made of Nitrile Rubber (NBR) on flat joint
Surface treatment	Painted by green colour polyurethane painting cycle RAL6003 (other colour available upon request) / Internal anticondensate painting / AISI316L version unpainted
Entries	N° 2 entries M25x1,5
Hardware and screws	AISI316L Stainless steel screws and AISI304 Stainless steel adjustable bracket
Lamps	Included
Rated operation voltage (UE)	See table
Frequency	See table
Power factor	> 0,95
Accessories	N° 1 brass nickel chrome plated plug + N° 1 brass nickel chrome plated cable gland PNA type c/w set of inner seals
Accessories available upon request	Protection guard (not to be sold separately unless as a spare part) Special brackets for pole mounting
Options upon request	HOT INSTANT RESTRIKE solution available via twin-arc lamp assuring immediate hot instant restrike ignition with flux that will reach 80% of the nominal lamp flux in about 3 minutes. HOT INSTANT RESTRIKE solution also available via INSTANT RESTRIKE BALLAST , assuring immediate hot instant restrike ignition with 80% of the lamp nominal flux in 3 seconds. (for high pressure sodium version)
Photometric light curves	<div> <div>FL-SA IM HG</div> </div> <div> <div>FL-SA IM HG wide beam</div> </div>

Dimensions FL



(FL..) Floodlights

TYPE	CODE	LAMP [W]	LAMP. TYPE	WEIGHT [kg]	VOLTAGE	FREQUENCY	AMBIENT TEMPERATURE
FL-15SA	A0101.111110	150	HPS	22.70	230V*	50HZ***	(-50°;+55°)
FL-25SA	A0101.111210	250	HPS	23.80	230V*	50HZ***	(-50°;+55°)
FL-40SA	A0101.411311	400	HPS	25.00	230V*	50HZ***	(-50°;+55°)
FL-25IM	A0102.111210	250	METAL HALIDE	23.80	230V*	50HZ***	(-50°;+55°)
FL-40IM	A0102.111314	400	METAL HALIDE	22.80	230V*	50HZ***	(-50°;+55°)
FL-25HG	A0103.111210	250	MERCURY VAPOUR	23.70	230V*	50HZ***	(-50°;+55°)
FL-40HG	A0103.111310	400	MERCURY VAPOUR	20.90	230V*	50HZ***	(-50°;+55°)
FL-14HA	A0104.111512	2X70	HALOGEN	20	24VDC	-	(-50°;+55°)
FL-14HA	A0104.111511	2X70	HALOGEN	20	48VDC	-	(-50°;+55°)
FL-50HA	A0104.111410	500	HALOGEN	19	230V**	50/60HZ	(-50°;+55°)

* 220 V and 240 V versions available upon request

** 220 V, 240 V (marking upon request)

*** 60 Hz available upon request

Below -20°C, mercury vapour and metal halid floodlight can be used, providing they are switched on 24 hours a day.