

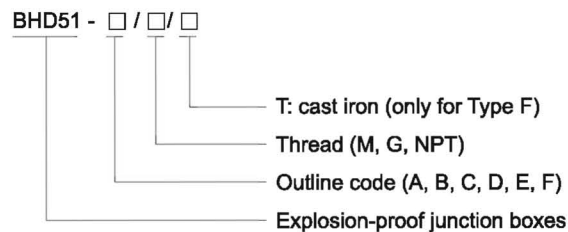


Junction Boxes

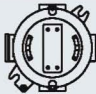




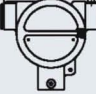
BHD51 Series Explosion-proof Junction Boxes

- ◆ Explosion protection to
 - CENELEC
 - IEC
 - NEC
- ◆ Can be used in
 - Zone 1 and Zone 2
 - Zone 21 and Zone 22
 - Class I, Zone 1 and Zone 2
 - Class I, Division 1, Groups A, B, C, D
- ◆ Six types: A, B, C, D, E, F.
- ◆ Type A, B, C, D, E in copper-free aluminium only; Type F in copper-free aluminium or cast iron.

■ Catalogue number logic



Selection table

Type/Ordering code	Schematic diagram	Weight (kg)	
BHD51-A/M20 x 1.5	Type A 	0.70	
BHD51-A/M25 x 1.5			
BHD51-B/M20 x 1.5	Type B 	0.70	
BHD51-B/M25 x 1.5			
BHD51-C/M20 x 1.5	Type C 	0.70	
BHD51-C/M25 x 1.5			
BHD51-D/M20 x 1.5	Type D 	0.70	
BHD51-D/M25 x 1.5			
BHD51-E/M20 x 1.5	Type E 	0.70	
BHD51-E/M25 x 1.5			
BHD51-F/M25 x 1.5	Type F 	Copper-free aluminium	0.80
		Cast iron	2.10



Zones 1&2; 21&22

Technical data

Explosion-proof junction boxes BHD51-□/□/□

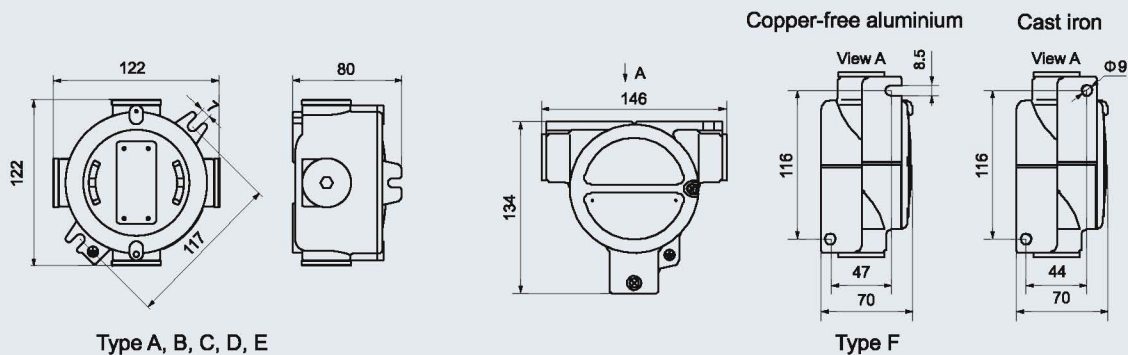
Explosion protection	⚠ II 2 G Ex d IIC T6 Gb ⚠ II 2 D Ex t IIIC T80°C Db IP66
Gas explosion protection	
Dust explosion protection	
Certificates	LCIE 11 ATEX 3005; IECEx QCM 11.0022X; POCC CN.Г Ъ05.B03637(Russia); FM(USA)
Conformity to standards	EN 60079-0:2009, EN 60079-1:2007, EN 60079-31:2009 IEC 60079-0:2007, IEC 60079-1:2007, IEC 60079-31:2008
Enclosure material	Copper-free aluminium or cast iron; powder coated surface
Enclosure colour	Yellow (RAL1021)
Exposed fastener	Stainless steel
Rated current	20A
Rated voltage	Max. 500V AC
Terminal data	
Number	6 terminals (Type A-E), 4 terminals (Type F)
Cable cross section	0.2~2.5mm ²
Degree of protection	IP66
Ambient temperature	-60°C~+55°C
Cable entries	Standard M□ x 1.5 plug G□ plug or NPT□ plug on request
Cable gland(optional)	DQM-II (Ex d) or DQM-III (Ex d) is recommended. Please see P7/20~25.
Main application	Type A-E are used for wiring or branching; Type F is used as accessory for pendant pole type or ceiling type light fittings.

Terminals

Description	Illustration	Number	Ordering code	Weight (kg)	Note
Terminal		6	30008	0.10	For Type A, B, C, D, E
Terminal block		4	30009	0.10	For Type F



Dimension drawings (all dimensions in mm) - subject to alteration



Application instruction:

1. Type F (copper-free aluminium) is used as mounting accessory for light fittings BAD61-125, BAD81, BAD, BDD81, BAD85 etc.
2. Type F (cast iron) is used as mounting accessory for light fittings BAD61-250, BAD61-400, etc.