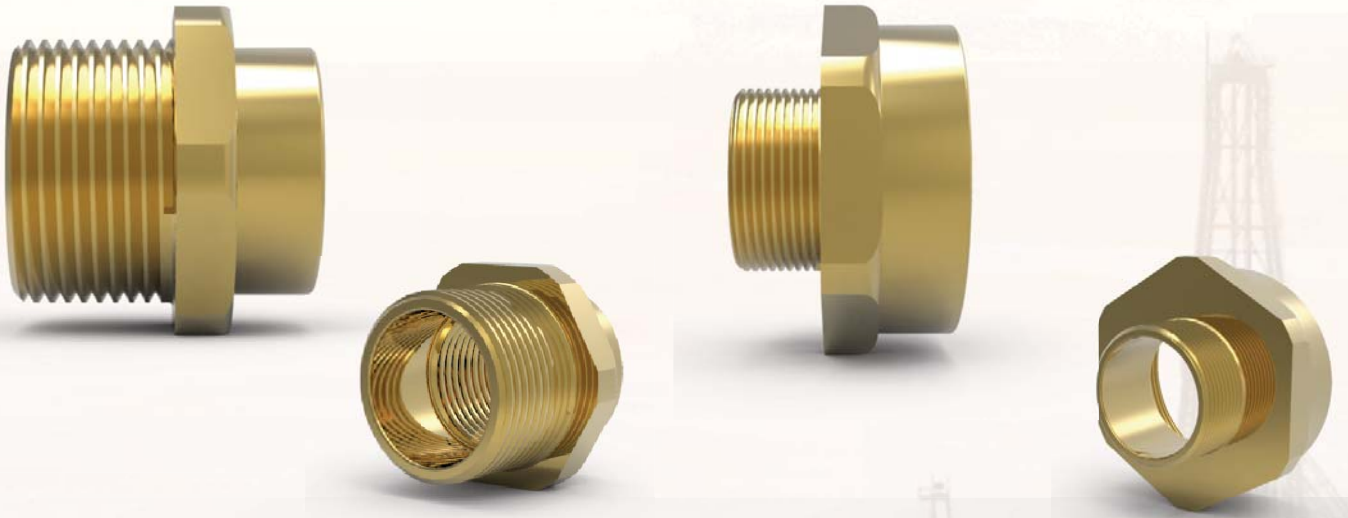


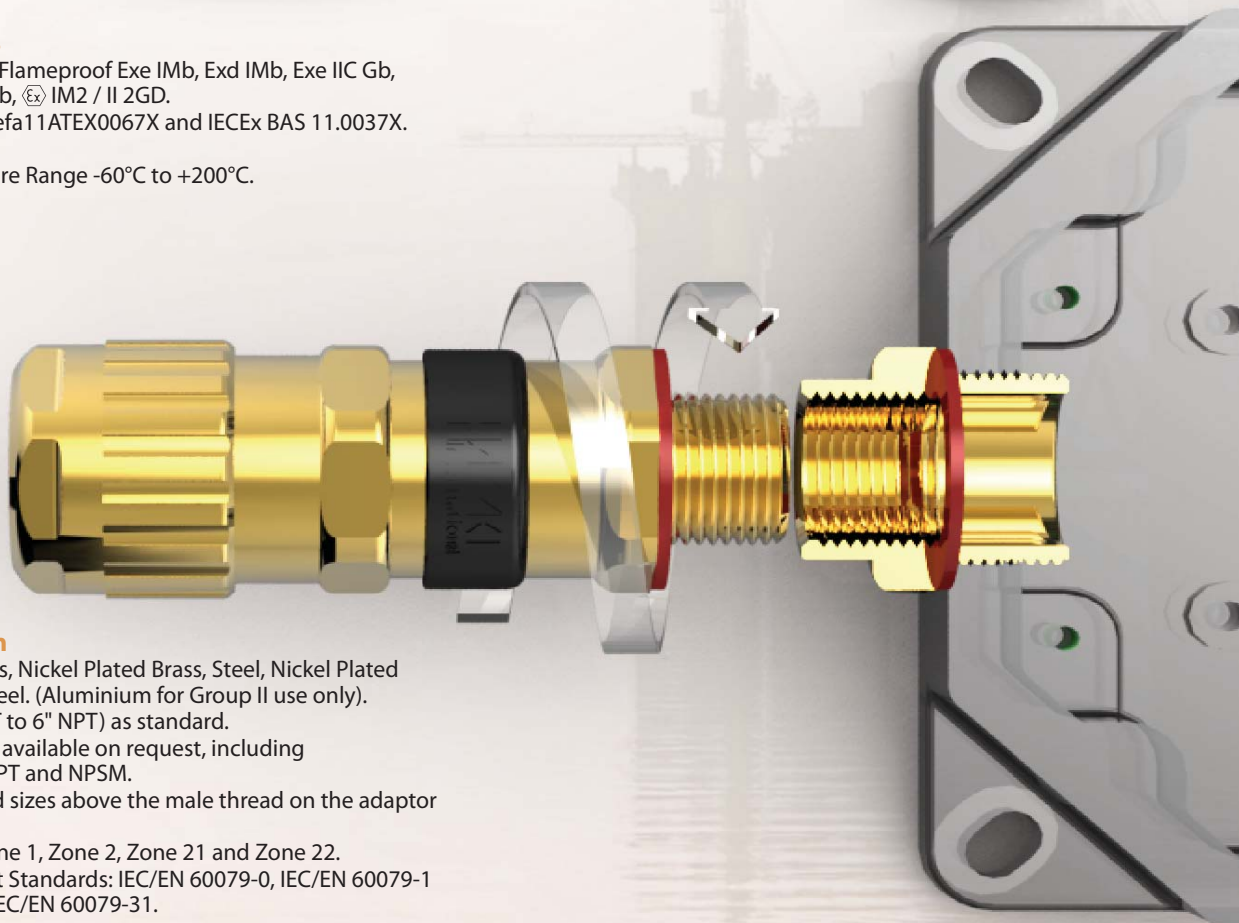
Flameproof Exd / Increased Safety Exe Dual Certified ATEX / IECEx

476 Adaptor / Reducer (Male to Female)



Certification Details

- Increased Safety and Flameproof Exe IMb, Exd IMb, Exe IIC Gb, Exd IIC Gb, Extb IIC Db, IM2 / II 2GD.
- Certificate No's: Baseefa11ATEX0067X and IECEx BAS 11.0037X.
- GOST R certified.
- Operating Temperature Range -60°C to +200°C.
- Group I, II and III.



General Information

- Manufactured in Brass, Nickel Plated Brass, Steel, Nickel Plated Steel and Stainless Steel. (Aluminium for Group II use only).
- M12 to M130 (3/8" NPT to 6" NPT) as standard.
- Other thread options available on request, including BSPP, BSPT_r, PG, ET, NPT and NPSM.
- Up to two step thread sizes above the male thread on the adaptor is permitted.
- Suitable for use in Zone 1, Zone 2, Zone 21 and Zone 22.
- Construction and Test Standards: IEC/EN 60079-0, IEC/EN 60079-1 IEC/EN 60079-7 and IEC/EN 60079-31.
- Ingress Protection: IP66.
- Assembly Instruction Sheet: AI 380.

Always state the male thread first

Ordering Examples:

Note: When ordering metric threads larger than M75, include the thread pitch details.

Product	Thread Size	Material	Finish
476/Adaptor	M20 Male x 1" NPT Female	Brass	Nickel Plated

Ordering Example:

Always state the male thread first

Product	Thread Size	Material	Finish
476/Reducer	M32 Male x M20 Female	Stainless Steel	N/A

Adaptors / Reducers

Metric – BS 3643		
Size	Major Dia. (mm)	Pitch (mm)
M12	11.97	1.5
M16	15.97	1.5
M20	19.97	1.5
M25	24.97	1.5
M32	31.97	1.5
M40	39.97	1.5
M50	49.97	1.5
M63	62.97	1.5
M75	74.97	1.5
M80	79.97	2.0
M90	89.97	2.0
M100	99.97	2.0
M110	109.97	2.0
M115	114.97	2.0
M120	115.97	2.0
M130	129.97	2.0

National Pipe Thread NPT – USAS B 2.1 <i>Taper 1 in 15 on Major Diameter</i>		
Size	Major Dia. (mm)	TPI
3/8"	17.15	18
1/2"	21.34	14
3/4"	26.67	14
1"	33.40	11 1/2
1 1/4"	42.16	11 1/2
1 1/2"	48.26	11 1/2
2"	60.33	11 1/2
2 1/2"	73.03	8
3"	88.90	8
3 1/2"	101.60	8
4"	114.30	8
5"	141.30	8
6"	168.28	8

Pipe Gauge PG – DIN 40430		
Size	Major Dia. (mm)	TPI
PG 7	12.50	20
PG 9	15.20	18
PG 11	18.60	18
PG 13.5	20.40	18
PG 16	22.50	18
PG 21	28.30	16
PG 29	37.00	16
PG 36	47.00	16
PG 42	54.00	16
PG 48	59.30	16

KEY:		METRIC & ET																								
A = ADAPTOR		1/2"	3/8"	3/4"	1"	1 1/4"	1 1/2"	2"	2 1/2"	M12	M16	M20	M25	M32	M40	M50	M63	M75	M80	M90	M100	M110	M115	M120	M130	
R = REDUCER																										
METRIC & ET	1/2" *	M12 *	A	A	A																					
	3/8" *	M16 *	A	A	A	A																				
	3/4"	M20	R	A	A	A	A																			
	1"	M25	R	R	R	A	A	A																		
	1 1/4"	M32	R	R	R	R	A	A	A																	
	1 1/2"	M40	R	R	R	R	R	A	A	A																
	2"	M50	R	R	R	R	R	R	A	A	A															
	2 1/2"	M63	R	R	R	R	R	R	R	A	A	A														
		M75	R	R	R	R	R	R	R	R	A	A	A													
		M80	R	R	R	R	R	R	R	R	R	A	A	A												
		M90	R	R	R	R	R	R	R	R	R	R	A	A	A											
		M100	R	R	R	R	R	R	R	R	R	R	R	R	A	A	A									
		M110	R	R	R	R	R	R	R	R	R	R	R	R	R	R	A	A	A							
	M115	R	R	R	R	R	R	R	R	R	R	R	R	R	R	R	A	A	A							
	M120	R	R	R	R	R	R	R	R	R	R	R	R	R	R	R	R	A	A	A						
	M130	R	R	R	R	R	R	R	R	R	R	R	R	R	R	R	R	R	A	A	A					
MALE THREAD NPT, BSPP, BSPT & NPSM	3/8" *		A	A	A	A																				
	1/2"		R	A	A	A	A																			
	3/4"		R	R	R	A	A	A																		
	1"		R	R	R	R	A	A	A																	
	1 1/4"		R	R	R	R	R	A	A	A																
	1 1/2"		R	R	R	R	R	R	A	A	A															
	2"		R	R	R	R	R	R	R	A	A	A														
	2 1/2"		R	R	R	R	R	R	R	R	A	A	A													
	3"		R	R	R	R	R	R	R	R	R	R	A	A	A											
	3 1/2"		R	R	R	R	R	R	R	R	R	R	R	A	A	A										
	4"		R	R	R	R	R	R	R	R	R	R	R	R	A	A	A									
	5"		R	R	R	R	R	R	R	R	R	R	R	R	R	R	A	A	A							
	6"		R	R	R	R	R	R	R	R	R	R	R	R	R	R	R	A	A	A						
PG	PG7 *		A	A	A																					
	PG9 *		A	A	A																					
	PG11 *		R	A	A	A																				
	PG13.5		R	A	A	A	A																			
	PG16		R	R	A	A	A	A																		
	PG21		R	R	R	A	A	A																		
	PG29		R	R	R	R	R	A	A	A																
	PG36		R	R	R	R	R	R	A	A	A															
PG42		R	R	R	R	R	R	R	A	A	A															
PG48		R	R	R	R	R	R	R	R	A	A															

* Group II Only.

