
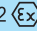


**ESECUZIONE  
ANTIDEFAGRANTE** 

CE 0722  II 2GD Ex d IIC Ex tD A21 IP 66/67  
CE 0722  II 2GD Ex e II Ex tD A21 IP 66/67

**EX  
CODE**

**CERTIFICAZIONE**  
  
  
  


**CESI 02 ATEX 049 (Elfit)**  
**AUSTRALIAN**  
**GOST R**  
**GOST K**

**CERTIFICATE**

**DIRETTIVA**

94/9/CE

**DIRECTIVE**

**NORME**

EN 60079-0 - EN 60079-1 - EN 60079-7 - EN 60529 - EN 61241-1 - EN 61241-0

**STANDARDS**

**INSTALLAZIONE** (secondo le EN 60079.10 - EN 60079.14)

zona 1 - 2 - 21 - 22

(according to EN 60079.10 - EN 60079.14) **INSTALLATION**

**CARATTERISTICHE**

Le riduzioni e gli adattatori vengono utilizzati per accoppiare apparecchiature, cassette, tubi ed imbrocchi di diverso diametro e filettature.

**FEATURES**

Reducers and adaptors are used to connect equipment, enclosures, pipes and hubs of different diameters and threads.

**COSTRUZIONE**

Acciaio zincato o alluminio esente da rame (vedi tabella).  
Filettatura ISO7/1.

**CONSTRUCTION**

Galvanised steel or copper-free aluminium alloy (see table).  
ISO7/1 thread.

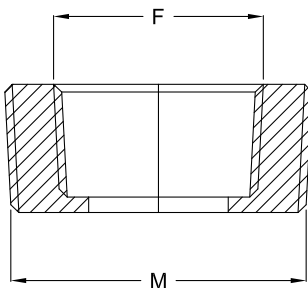


**ACCESSORI A RICHIESTA**

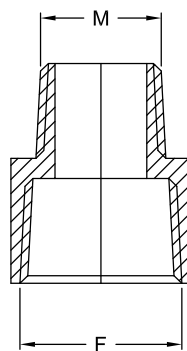
Altre filettature.  
Altri materiali (ottone, acciaio inossidabile).

**ACCESSORIES UPON REQUEST**

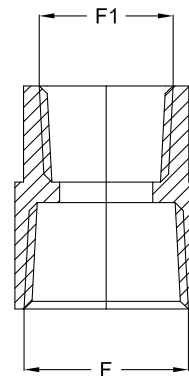
Other materials (brass, stainless steel).  
Other threads.



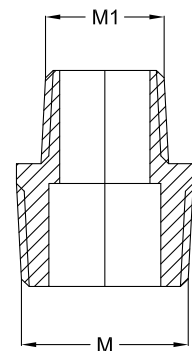
RE



REB



REM



REN

Codice Code	Maschio Male M	Femmina Female F	Materiale Material	Peso Weight Kg	Prezzo Price
RE21G	3/4"	1/2"	Acciaio zincato - Galvanized steel	0,038	
RE31G	1"	1/2"	Acciaio zincato - Galvanized steel	0,089	
RE32G	1"	3/4"	Acciaio zincato - Galvanized steel	0,058	
RE41A	1 1/4"	1/2"	Alluminio - Aluminium	0,064	
RE42A	1 1/4"	3/4"	Alluminio - Aluminium	0,053	
RE43A	1 1/4"	1"	Alluminio - Aluminium	0,034	
RE51A	1 1/2"	1/2"	Alluminio - Aluminium	0,092	
RE52A	1 1/2"	3/4"	Alluminio - Aluminium	0,079	
RE53A	1 1/2"	1"	Alluminio - Aluminium	0,061	
RE54A	1 1/2"	1 1/4"	Alluminio - Aluminium	0,029	
RE61A	2"	1/2"	Alluminio - Aluminium	0,153	
RE62A	2"	3/4"	Alluminio - Aluminium	0,148	
RE63A	2"	1"	Alluminio - Aluminium	0,124	
RE64A	2"	1 1/4"	Alluminio - Aluminium	0,095	
RE65A	2"	1 1/2"	Alluminio - Aluminium	0,068	
RE71A	2 1/2"	1/2"	Alluminio - Aluminium	0,244	
RE72A	2 1/2"	3/4"	Alluminio - Aluminium	0,243	
RE73A	2 1/2"	1"	Alluminio - Aluminium	0,272	
RE74A	2 1/2"	1 1/4"	Alluminio - Aluminium	0,238	
RE75A	2 1/2"	1 1/2"	Alluminio - Aluminium	0,198	
RE76A	2 1/2"	2"	Alluminio - Aluminium	0,136	
RE81A	3"	1/2"	Alluminio - Aluminium	0,416	
RE82A	3"	3/4"	Alluminio - Aluminium	0,355	
RE83A	3"	1"	Alluminio - Aluminium	0,323	
RE84A	3"	1 1/4"	Alluminio - Aluminium	0,302	
RE85A	3"	1 1/2"	Alluminio - Aluminium	0,318	
RE86A	3"	2"	Alluminio - Aluminium	0,249	
RE87G	3"	2 1/2"	Acciaio zincato - Galvanized steel	0,578	

Codice Code	Femmina Female F	Maschio Male M	Materiale Material	Peso Weight Kg	Prezzo Price
REB21G	3/4"	1/2"	Acciaio zincato - Galvanized steel	0,069	
REB31G	1"	1/2"	Acciaio zincato - Galvanized steel	0,108	
REB32G	1"	3/4"	Acciaio zincato - Galvanized steel	0,109	
REB41G	1 1/4"	1/2"	Alluminio - Aluminium	0,187	
REB42G	1 1/4"	3/4"	Alluminio - Aluminium	0,171	
REB43G	1 1/4"	1"	Alluminio - Aluminium	0,209	
REB51G	1 1/2"	1/2"	Alluminio - Aluminium	0,352	
REB52G	1 1/2"	3/4"	Alluminio - Aluminium	0,323	
REB53G	1 1/2"	1"	Alluminio - Aluminium	0,337	
REB54G	1 1/2"	1 1/4"	Alluminio - Aluminium	0,359	
REB61G	2"	1/2"	Alluminio - Aluminium	0,459	
REB62G	2"	3/4"	Alluminio - Aluminium	0,417	
REB63G	2"	1"	Alluminio - Aluminium	0,489	
REB64G	2"	1 1/4"	Alluminio - Aluminium	0,436	
REB65G	2"	1 1/2"	Alluminio - Aluminium	0,463	
REB71G	2 1/2"	1/2"	Alluminio - Aluminium	0,597	
REB72G	2 1/2"	3/4"	Alluminio - Aluminium	0,611	
REB73G	2 1/2"	1"	Alluminio - Aluminium	0,601	
REB74G	2 1/2"	1 1/4"	Alluminio - Aluminium	0,663	
REB75G	2 1/2"	1 1/2"	Alluminio - Aluminium	0,667	
REB76G	2 1/2"	2"	Alluminio - Aluminium	0,531	
REB81G	3"	1/2"	Alluminio - Aluminium	0,674	
REB82G	3"	3/4"	Alluminio - Aluminium	0,687	
REB83G	3"	1"	Alluminio - Aluminium	0,900	
REB84G	3"	1 1/4"	Alluminio - Aluminium	0,864	
REB85G	3"	1 1/2"	Alluminio - Aluminium	0,884	
REB86G	3"	2"	Alluminio - Aluminium	0,767	
REB87G	3"	2 1/2"	Acciaio zincato - Galvanized steel	1,055	

Codice Code	Femmina Female F	Femmina Female F	Materiale Material	Peso Weight Kg	Prezzo Price
REM21G	3/4"	1/2"	Acciaio zincato - Galvanized steel	0,104	
REM31G	1"	1/2"	Acciaio zincato - Galvanized steel	0,216	
REM32G	1"	3/4"	Acciaio zincato - Galvanized steel	0,181	
REM41G	1 1/4"	1/2"	Alluminio - Aluminium	0,189	
REM42G	1 1/4"	3/4"	Alluminio - Aluminium	0,180	
REM43G	1 1/4"	1"	Alluminio - Aluminium	0,217	
REM51G	1 1/2"	1/2"	Alluminio - Aluminium	0,429	
REM52G	1 1/2"	3/4"	Alluminio - Aluminium	0,368	
REM53G	1 1/2"	1"	Alluminio - Aluminium	0,396	
REM54G	1 1/2"	1 1/4"	Alluminio - Aluminium	0,342	
REM61G	2"	1/2"	Alluminio - Aluminium	0,479	
REM62G	2"	3/4"	Alluminio - Aluminium	0,455	
REM63G	2"	1"	Alluminio - Aluminium	0,516	
REM64G	2"	1 1/4"	Alluminio - Aluminium	0,528	
REM65G	2"	1 1/2"	Alluminio - Aluminium	0,455	
REM71G	2 1/2"	1/2"	Alluminio - Aluminium	0,7	
REM72G	2 1/2"	3/4"	Alluminio - Aluminium	0,675	
REM73G	2 1/2"	1"	Alluminio - Aluminium	0,643	
REM74G	2 1/2"	1 1/4"	Alluminio - Aluminium	0,945	
REM75G	2 1/2"	1 1/2"	Alluminio - Aluminium	0,703	
REM76G	2 1/2"	2"	Alluminio - Aluminium	0,753	
REM81G	3"	1/2"	Alluminio - Aluminium	0,932	
REM82G	3"	3/4"	Alluminio - Aluminium	0,723	
REM83G	3"	1"	Alluminio - Aluminium	0,898	
REM84G	3"	1 1/4"	Alluminio - Aluminium	0,794	
REM85G	3"	1 1/2"	Alluminio - Aluminium	0,782	
REM86G	3"	2"	Alluminio - Aluminium	1,024	
REM87G	3"	2 1/2"	Acciaio zincato - Galvanized steel	0,855	

Codice Code	Maschio Male M	Maschio Male M	Materiale Material	Peso Weight Kg	Prezzo Price
REN21G	3/4"	1/2"	Acciaio zincato - Galvanized steel	0,100	
REN31G	1"	1/2"	Acciaio zincato - Galvanized steel	0,150	
REN32G	1"	3/4"	Acciaio zincato - Galvanized steel	0,120	
REN41G	1 1/4"	1/2"	Alluminio - Aluminium	0,250	
REN42G	1 1/4"	3/4"	Alluminio - Aluminium	0,130	
REN43G	1 1/4"	1"	Alluminio - Aluminium	0,230	
REN51G	1 1/2"	1/2"	Alluminio - Aluminium	0,600	
REN52G	1 1/2"	3/4"	Alluminio - Aluminium	0,150	
REN53G	1 1/2"	1"	Alluminio - Aluminium	0,170	
REN54G	1 1/2"	1 1/4"	Alluminio - Aluminium	0,200	
REN61G	2"	1/2"	Alluminio - Aluminium	0,540	
REN62G	2"	3/4"	Alluminio - Aluminium	0,220	
REN63G	2"	1"	Alluminio - Aluminium	0,240	
REN64G	2"	1 1/4"	Alluminio - Aluminium	0,250	
REN65G	2"	1 1/2"	Alluminio - Aluminium	0,230	
REN71G	2 1/2"	1/2"	Alluminio - Aluminium	0,310	
REN72G	2 1/2"	3/4"	Alluminio - Aluminium	0,320	
REN73G	2 1/2"	1"	Alluminio - Aluminium	0,950	
REN74G	2 1/2"	1 1/4"	Alluminio - Aluminium	0,340	
REN75G	2 1/2"	1 1/2"	Alluminio - Aluminium	0,370	
REN76G	2 1/2"	2"	Alluminio - Aluminium	0,370	
REN81G	3"	1/2"	Alluminio - Aluminium	0,480	
REN82G	3"	3/4"	Alluminio - Aluminium	0,490	
REN83G	3"	1"	Alluminio - Aluminium	0,500	
REN84G	3"	1 1/4"	Alluminio - Aluminium	0,520	
REN85G	3"	1 1/2"	Alluminio - Aluminium	0,500	
REN86G	3"	2"	Alluminio - Aluminium	0,500	
REN87G	3"	2 1/2"	Acciaio zincato - Galvanized steel	1,100	